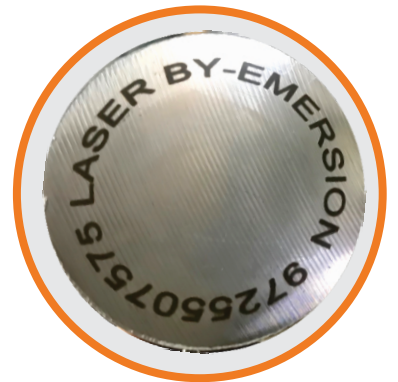




EMERSION INDUSTRIES



YOUR PARTNER FOR METAL MARKING SOLUTION



+91 97255 07575



info@emersion.in



www.emersion.in

TECHNICAL SPECIFICATION

MODEL					
Output Power	10W	20W	30W	50W	100W
Wavelength	1064 nm				
Power Adjustment	0 to 100%				
Cooling	Air Cooled				
Min. Line Width	Min. 0.03 mm (Depend on Material)				
Max. Speed	Max. 12000 mm/s (Max. Linear Speed)				
Marking Depth	0.01- 0.3 mm (Depends on Material)				
Min Character Height	0.5 mm				
Marking Range	100*100mm* (Standard) Optional 145*145mm*, 175*175 mm & 300*300mm				
Supporting Format	Support PLT , DXF , BMP File etc, Using SHX TTF Character Storage Directly				
Single Pulse Energy (mj)	0.5 to 20KHz	1 to 20KHz	1 to 30KHz	1 to 50KHz	2.0 to 50KHz
Repetition Frequency Range	20-80 KHz	20-80 KHz	30-80 KHz	50-100KHz	50-100 KHz
Output Power Stability	<3%				
Beam Quality (M2)	< 1.5		< 1.8		< 2.0
Pulse Width (ns)	<100 to 20 KHz		< 130 to 20 KHz		< 200 to 50 Khz
Power Supply	Single Phase 220VAC				
Max Power Consumption	120 Watt	200 Watt	250 Watt	300 Watt	500 Watt

VALUES AT EMERSION

- Decade of Tradition
- Respect to customers
- Product Durability
- Trusted Ethics
- Genuine Guidance

COMPETENCIES

- Conveyorised marking systems
- Rotary marking system
- Gantry Loaded automated Marking system
- Tier - 2 Supplier Integration
- Application specific marking system
- Auto Z axis option
- Integrated machine vision & Code Grading System

LASER MARKER FEATURES

- Non contact marking
- Abrasion resistance
- Permanent Marking
- Clean & Safe Process
- Ideal for finished Product Marking
- Red Pointer for accurate & safe set-up
- Easy to automized & integrate with online Process.

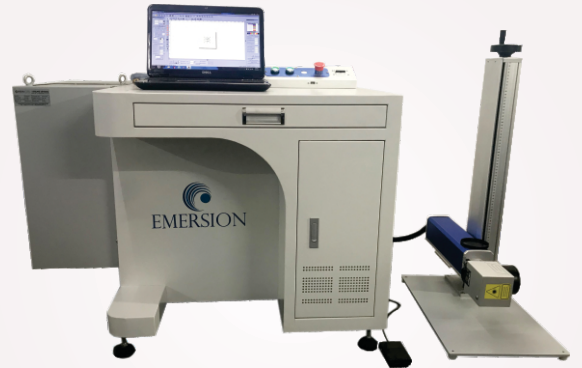
AREA OF APPLICATION

- Automobile Industries
- Auto Ancillaries
- Engineering Industries
- Industrial Tooling
- Electrical & Electronic industries
- Jewellery
- Surgical Tools / Body Implants
- Bath Fitting
- Giftware Industries

PRODUCT RANGE



TABLE TOP MARKER



FLOOR MOUNTED MARKER



COMPACT MARKER



THREE AXIS MARKER

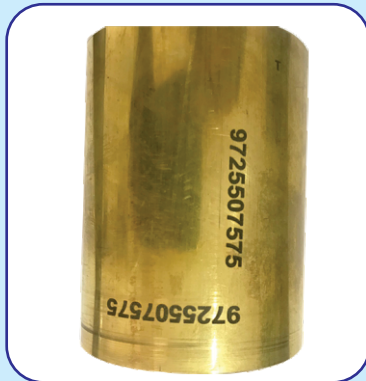
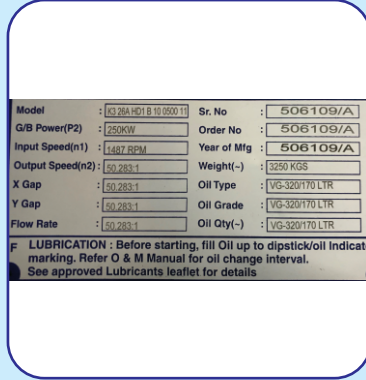


SPLIT MARKER



ON THE FLY MARKER

MARKED SAMPLES



Office :

543 / 548, Satva Icon Complex, Opp. Vastral Gam Metro Station,
 S.P. Ring Road, Vastral, Ahmedabad - 382418, Gujarat - India

Factory :

273/B/3, G.I.D.C., Makarpura, Vadodara -390 010, Gujarat (India)

+91 97255 07575 | info@emersion.in | www.emersion.in

